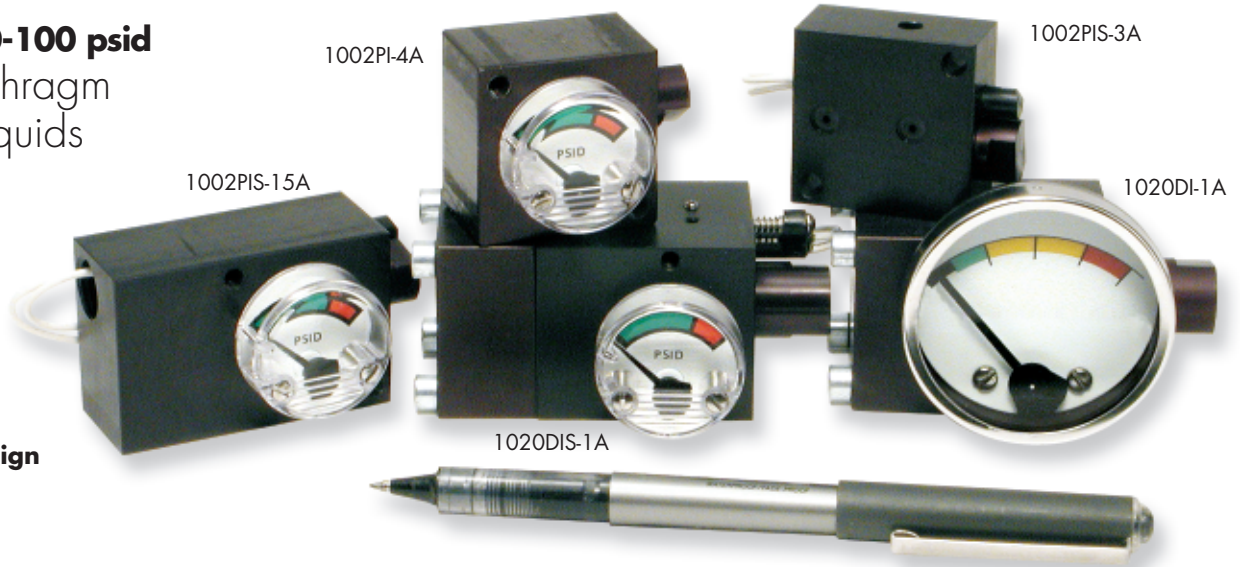


0-25" H₂O to 0-100 psid
Piston & Diaphragm
Sensors for Liquids
or Gases

Features

- Small size
- Low cost
- Rugged
- OEM friendly design



We refer to these smaller versions of our differential pressure line as indicators. A 1-inch diameter dial with a simple red/green arc is standard to indicate normal operation and alarm conditions. The interface between the red and green portions of the arc is located at 70% of the full scale on standard models.

Made of a chemical and impact resistant clear molded plastic, the dial has a wide viewing angle. Popular where the graduated scales and higher accuracy of our full-size DP line are not necessary, they have ±5% accuracy and a low price to suit your budget.

Our 1002 series piston models are the lowest cost option

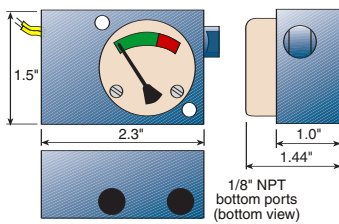
for liquid applications. Though small, they are the favorites for OEM requirements and measure from 0-1 to 0-100 psid. Our 1020 series diaphragm models are more sensitive and measure from 0-25" H₂O to 0-30 psid.

We offer an optional SPST or SPDT, hermetically sealed reed switch, where an output is required. Our DP switch models, with no dial, are also popular.

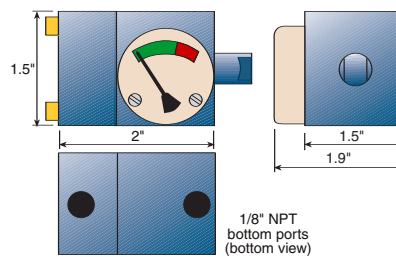
A larger 2-inch dial with a graduated scale is available for higher resolution measurements. Also common are our optional green/yellow/red arcs. Or you can specify our level measurement arcs where the red alarm condition is at the lower end of the scale.

Dimensions

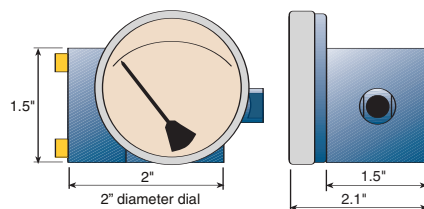
Detailed drawings on website.



1002PIS-15A



1020DI-5A



1020DI-1A

Specifications (Detailed Specification Sheets on Website)

Model	Differential pressure range	Maximum line pressure/temperature	Accuracy (F.S.) (Ascending)	Porting (Many porting options available)	Electrical Available**
1002PI/PIS	0-1 to 0-100 psid (0-0.07 to 0-7 bar)	3000* psig (200 bar)/200°F (93°C)	5%	1/8" NPT	1 switch
1020DI/DIS	0-25" H ₂ O to 0-30 psid (0-0.06 to 0-2 bar)	1000 psig (67 bar)/200°F (93°C)	5%	1/8" NPT	1 or 2 switches

P=Piston D=Diaphragm I=Indicator S=Switch

*5000 psig model available on request

**A DIN 43650C-PG7 with mating connector is optional, rated IP65

How to Order

Select from each of the applicable categories to construct a model number. Use the model number when ordering or obtaining additional information and pricing from Orange Research or your local distributor.

Reordering? You must supply the Part Number from your instrument label.

Sample Model Number
1002PIS - 1A - 1M - A 0-1 psid, V

1002PIS	1A	1M	A	0-5 psid	V
Model	Pressure Body	Dial Case	Electrical	Breakpoint/Setpoint	Options
1002PI 1002PIS 1020DI 1020DIS	1A = in-line ports 3A = manifold back ports 4A = 1/8" NPT back ports 5A = 1/8" NPT bottom ports 15A = 1/8" NPT bottom ports w/1/4" conduit port <i>In-line porting N/A with 1002 series</i>	1M = 1" molded lens (std.) 2L = 2" SS bezel	A = SPST, N.O. B = SPST, N.C. C = SPDT	0-25" H ₂ O; 0-1, 0-2, 0-3, 0-5, 0-8, 0-10, 0-15, 0-20, 0-25, 0-30, 0-35, 0-40, 0-50, 0-60, 0-80, 0-100 psid	Model 1002: Special Seals (Buna-N standard): V = Viton Model 1020: Special Diaphragm & Seals (Buna-N standard): E = EPDM F = Fluorosilicone V = Viton