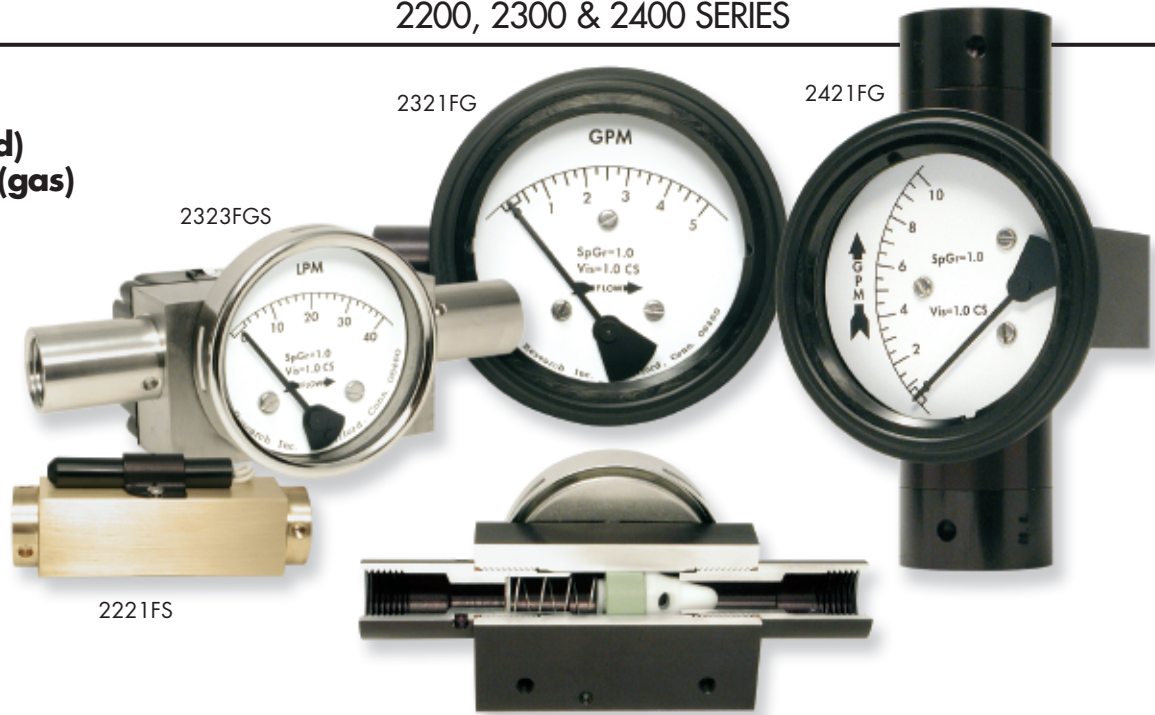


**0-1 to 0-30 GPM (liquid)
1.5-10 to 1-100 SCFM (gas)**
Variable-Area Flow
for Liquid and Gas

Features

- Large, easy-to-read dial
- Rugged, high line pressure design
- Vertical or horizontal mounting



Our variable-area flowmeters are designed for liquid or gas applications where rotameters often fall short. These models have large dials with bold markings and characters that are easy to read from a distance. They also handle high line pressures and can be mounted in any orientation.

Like rotameters, they are mounted directly in the flow stream, but with bodies machined from solid blocks of metal, they handle high-pressure applications of up to 5000 psi (vs 150 psi for rotameters). This makes them a natural for hydraulic systems.

The variable-area sensor, a movable Delrin cone (2200 & 2300) or Teflon cone (2400), rests in a precision orifice.

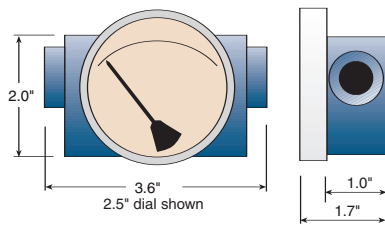
Fluid flow causes the sensor to move from the orifice and against a stainless steel spring while the flow rate is indicated on an easy-to-read dial face.

We offer them with pressure bodies (and wetted parts) of aluminum, stainless steel or brass. A variety of dial sizes are available, from 2.5 inch to 4.5 inch.

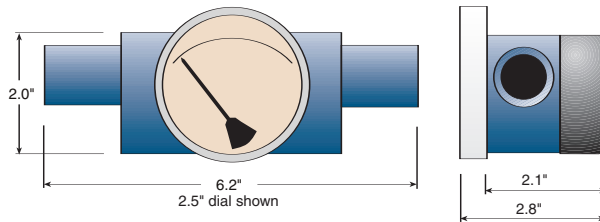
Choose from a wide selection of dial, porting, seal and calibration options. Switches, relays and transmitters are available with the dial or as stand-alone instruments. More details on these models can be found on our flow introduction pages 16-19. Electrical details are on pages 26-27.

Dimensions

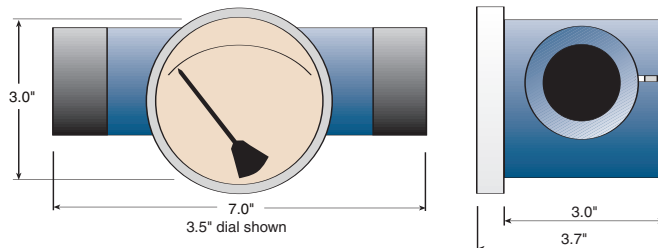
Detailed drawings on website.



2221FG



2323FGS



2421FG

Specifications (Detailed Specification Sheets on Website)

Model	Flow range	Porting	Maximum line press./temp.	Accuracy (F.S./repeatability)	Turndown*	Electrical Available**
2221FG/FGS/FS FG = Flow Gauge FGS = Flow Gauge-Switch FS = Flow Switch	<u>Liquids</u> 0-1 to 0-5 GPM (0-4 to 0-18 LPM) <u>Air & Gas</u> 1.5-10 to 3-25 SCFM (40-280 to 75-700 SLPM)	1/4" NPT	3000 psig (200 bar) 200°F (93°C)	<u>Liquids</u> 2%/1% <u>Air & Gas</u> 5%/1%	10:1	1 - 2 switches
2223FGS/FS/FGT/FT FGS = Flow Gauge-Switch FS = Flow Switch FGT = Flow Gauge-Transmitter FT = Flow Transmitter	<u>Liquids</u> 0-1 to 0-5 GPM (0-4 to 0-18 LPM) <u>Air & Gas</u> 1.5-10 to 3-25 SCFM (40-280 to 75-700 SLPM)	1/4" NPT	5000 psig (200 bar) 200°F (93°C)	<u>Liquids</u> 2%/1% <u>Air & Gas</u> 5%/1%	10:1	1 - 2 switches 1 relay transmitter NEMA 4X Class 1-Div. 2
2321FG/FGS/FS FG = Flow Gauge FGS = Flow Gauge-Switch FS = Flow Switch	<u>Liquids</u> 0-1 to 0-10 GPM (0-4 to 0-18 LPM) <u>Air & Gas</u> 4-30 to 10-100 SCFM (100 to 850 SLPM)	1/2" NPT	3000 psig (200 bar) 200°F (93°C)	<u>Liquids</u> 2%/1% <u>Air & Gas</u> 5%/1%	10:1	1 - 2 switches
2323FGS/FS/FGT/FT FGS = Flow Gauge-Switch FS = Flow Switch FGT = Flow Gauge-Transmitter FT = Flow Transmitter	<u>Liquids</u> 0-1 to 0-10 GPM (0-3.8 to 0-38 LPM) <u>Air & Gas</u> 4-30 to 10-100 SCFM (100-850 SLPM)	1/2" NPT	5000 psig (340 bar) 200°F (93°C)	<u>Liquids</u> 2%/1% <u>Air & Gas</u> 5%/1%	10:1	1 - 2 switches 1 relay transmitter NEMA 4X Class 1-Div. 2
2421FG/FGS/FS FG = Flow Gauge FGS = Flow Gauge-Switch FS = Flow Switch	<u>Liquids Only</u> 0-10 to 0-30 GPM (0-36 to 0-110 LPM)	1" NPT	1500 psig (100 bar) 200°F (93°C)	2%/1%	10:1	1 - 2 switches
2423FGS/FS FGS = Flow Gauge-Switch FS = Flow Switch	<u>Liquids Only</u> 0-10 to 0-30 GPM (0-36 to 0-110 LPM)	1" NPT	1500 psig (100 bar) 200°F (93°C)	2%/1%	10:1	1 - 2 switches 1 relay NEMA 4X

*Turndown results in 1st mark at approximately 10% of full scale

**NEMA 4X switch models have a 1/2 inch NPT conduit port as standard. A DIN 43650A-PG11 with mating connector is optional, rated IP65 & NEMA 4X

How to Order

Select from each of the applicable categories to construct a model number. Use the model number when ordering or obtaining additional information and pricing from Orange Research or your local distributor.

Reordering? You must supply the Part Number from your instrument label.

Sample Model Number

2221FGS - 1A - 2.5B - A 0-1 GPM-W, 5T

2221FGS	1A	2.5B	A	0-1 GPM	W	5T
Model	Flow Body	Dial Case	Switch	Range	Calibration	Options (more on pg. X)
2221FG	1A = aluminum	2.5B = 2.5" basic	A = SPST, N.O.	<u>Liquid</u>	W = std. calibr. -water	5 = plastic lens
2221FGS	1C = 316 SS	3.5B = 3.5" basic	B = SPST, N.C.	0-1, 0-2, 0-3, 04,	O = std. calibr. -oil	6 = liquid fill (glycerine)
2221FS	1E = brass	4.5B = 4.5" basic	C = SPDT	0-5, 0-8, 0-10, 0-15,	A = std. calibr. -air	8 = reverse flow
2223FGS		Change "B" to "F" above for flanged dial case	A-A = 2 ea. -A	0-20, 0-25, 0-30	S = special calibr.*	9 = vertical flow (specify direction – up or downward)
2223FS			B-B = 2 ea. -B	GPM	*Liquids: must specify specific gravity and viscosity	Special Seals (Buna-N standard):
2321FG			C-C = 2 ea. -C	<u>Air & Gas</u>	*Gas: must specify gas, pressure and temperature	T = Teflon
2321FGS			R2 = relay	2220 Series:	See std. calibration conditions page 18	V = Viton
2321FS			T1 - transmitter	1.5-10, 2-15, 3-20, 3-25 SCFM		
2323FGS				2320 Series:		
2323FS				4-30, 4-40, 5-50, 5-75, 10-100 SCFM		
More models above						